



**CE**  
 TECSELOR, S. L.  
 Polígono Industrial de Lorca, Buzón 180  
 Avda. Manuel Mtnez. Barea, Parc. M7/M14  
 30817 Lorca - Murcia - Spain  
 Office Phone. +34 968 476 368  
 Fax. +34 968 109 204  
 Technical Assistance. +34 678 424 587  
 Email: frimaq@frimaq.com

# THERMOSEALING

## MODEL MINI1-V

### WITH VACUUM PUMP

### WITH AUTOMATIC CUTTING

WITH ONLY A DIE WE CAN SEAL THREE DIFFERENT TRAYS MODELS

Silent Compressor

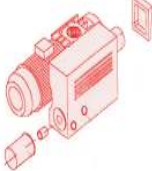
IF CUSTOMER HAS NOT COMPRESSED AIR NETWORK IT WOULD BE NECESSARY BUY THAT COMPRESSOR



WITH REMNANT ROLLER



REAR VIEW



BOMBA OXIGENO 21 MONO

WITHOUT REMNANT ROLLER



Optimal residual oxygen values are achieved without vacuum only with gas flush



OXYGEN CHECKER  €

OXYGEN CHECKER + Co2  €

**CHARACTERISTICS:**

- AISI 304 stainless steel structure.
- Vacuum by percentage, time or both.
- Gas injection by percentage and rising gas time.
- Temperature control by probe.
- Manual lowering chamber.
- 21 m<sup>3</sup> /h Busch vacuum pump.
- 21 m<sup>3</sup> /h oxygen pump option.
- 1 tray capacity of 1/2 GN.
- 2 trays capacity of 1/4 GN.
- 4 trays capacity of 1/8 GN.
- Surplus tray film cutting.
- 220v monophasic.
- 3000 W power.
- Air compressor needed.

**WWW.FRIMAQ.COM**  
 Nº REG. IND.: 30/29439

TECSELOR, S. L.  
 Polígono Industrial de Lorca, Buzón 180  
 Avda. Manuel Mtnez. Barea, Parc. M7/M14  
 30817 Lorca - Murcia -  
 Oficina Tell.: 968 476 368  
 Fax. - 968 109 204  
 Servicio Técnico. - 678 424 587  
 Correo electrónico: frimaq@frimaq.com  
 Correo electrónico: frimaq\_maquinaria@yahoo.es

MOLD SMOOTH PLATE + RING 1/2 GN

— INCLUDED €



Trays come off completely cut to outside without surplus film.  
 Approx. output: 80 trays/hour  
 (loading and unloading time included)

320x260 depth from 0 to 100 mm.  
 (1 UNIT)

MOLD SMOOTH PLATE + RING 1/4 GN

— INCLUDED €



The two trays come off completely cut to outside.  
 The separation between them will be done with a manual cutter cut, without rest of surplus film  
 Approx. output: 160 trays/hour  
 (loading and unloading time included)

160x260 depth from 0 to 100 mm.  
 (2 UNITS)

MOLD SMOOTH PLATE + RING 1/8 GN

— INCLUDED €



The four trays come off completely cut to outside.  
 The separation between them will be done with a manual cross-shape cut with a cutter. Without rest of surplus film

Approx. output: 320 trays/hour  
 (loading and unloading time included)

160x130 depth from 0 to 100 mm.  
 (4 UNITS)

OPTION : CAVE INDIVIDUAL PLATES



PLATES TO PROTECT THE PRODUCT AREA OF THE SEALED HEAT

MACHINE PRICE WITHOUT REMNANT ROLLER  €

AUTOMATIC REMNANT ROLLER  €

SILENT COMPRESSOR  €

CAVE PLATES / UNIT PRICE  €

OXYGEN PUMP  €



OPTION FOR ALL MOLDS  
 REPLACEABLES RINGS TO ADAPT TRAYS OF ANY MANUFACTURER