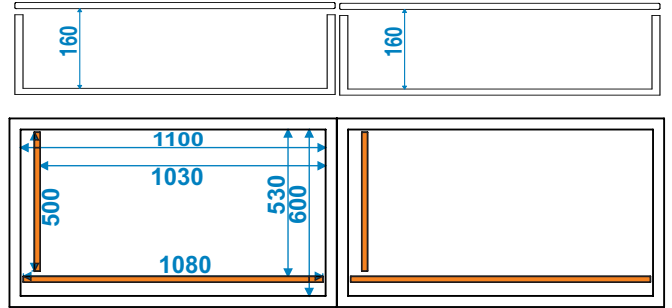


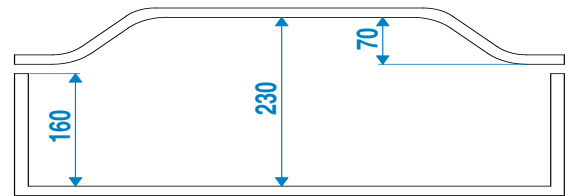
**STRAIGHT LID
OPTION : CURVE LID**



STRAIGHT LID



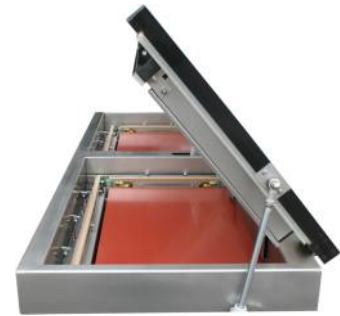
OPTION : CURVE LID



PUMP:.....100 - 160 - 202 - 250 - 302 m³/h
POWER:... 2,2 - 4 - 4,5- 5,5- 5,5 kw
VOLTAGE:.....400 V - 50/60 Hz
WEIGHT:.....700-800 Kg.

OPTIONS.-

- GAS.....
- CUTTING WIRE (Excess plastic)..
- SUPPLEMENT BARS
- AUTOMATIC LOWERING.....



GENERAL FEATURES.-

- Made of stainless steel AISI 304.
- Hygienic specially designed.
- Digital control board with 25 programs % and time vacuum.
- % and time gas.
- Holding container when gas enters.
- Digital working hours counter.
- SOFT AIR.
- Automatic regulation of cooling weld.
- Double sealed for fat, blood, water, etc.
- Easy disassembly for cleaning welding bars.

(Only with gas option)
 (Only with gas option)